

For Sale

Nevaeh Estates Subdivision

42 Lots
Available



Easy
access to
Hwy. 264 &
Hwy. 112

--

Located on
south side of
Brown Road,
east of
Hwy. 112

*A secluded haven nestled in the trees of
Cave Springs in beautiful Benton County.*

\$29,500 per lot

C2
Zoning



- All lots are pre-perked
- Beautiful wooded lots on gentle rolling acreage
- Custom builders
- Continuity in curbing and street lamps
- Drip fields are pre-engineered and filed with county
- Lot sizes range from .60 to .90 acres
- See next page for plat and lot sizes; see page 3 for location map

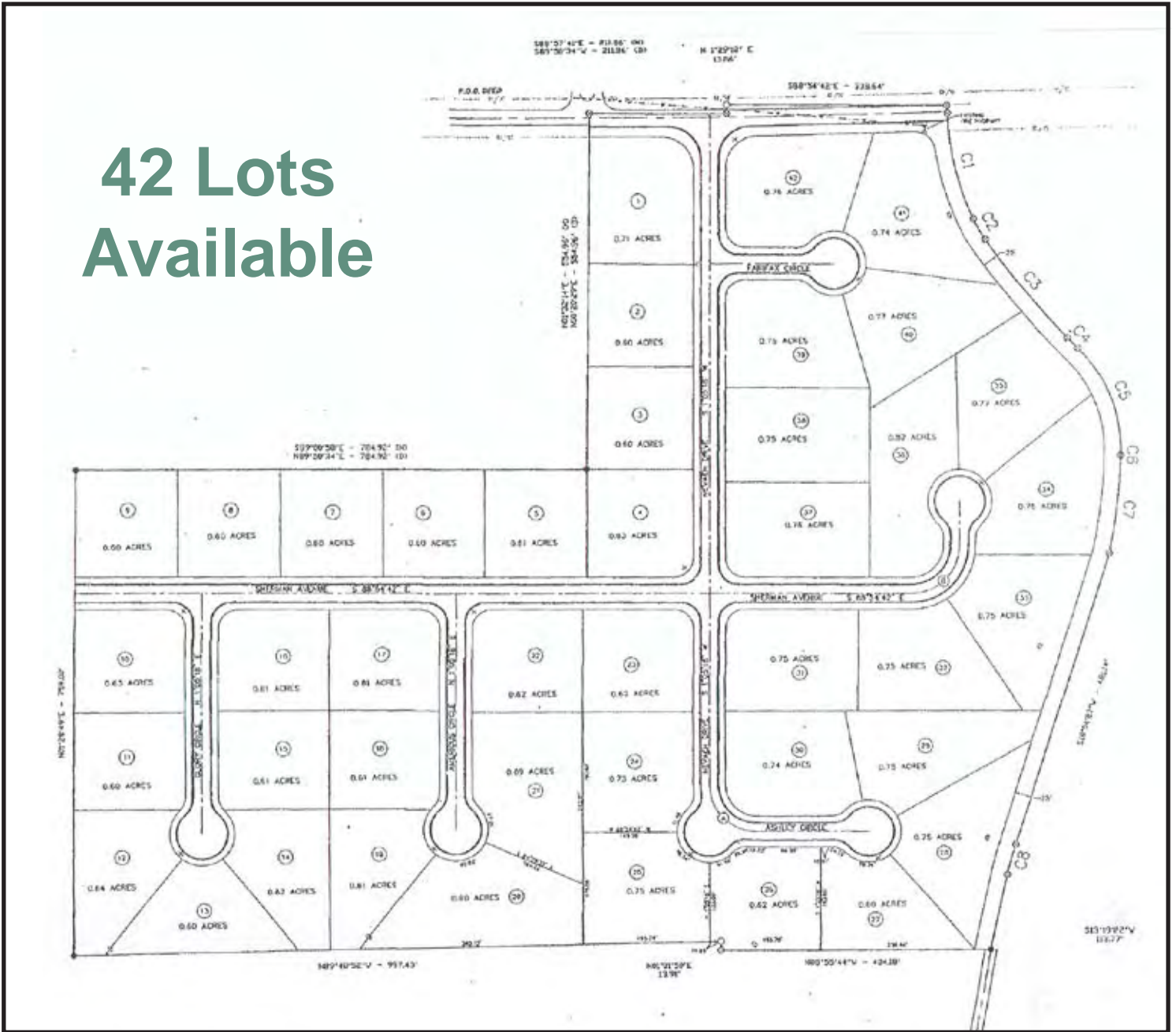
For more information contact:

Larry Hall at 479.936.2709 | Justin Combs at 479.718.2227

For Sale

Nevaeh Estates Subdivision

42 Lots Available



Lot	Size	Lot	Size	Lot	Size	Lot	Size	Lot	Size	Lot	Size
1	0.71	8	0.60	15	0.61	22	0.62	29	0.75	36	0.82
2	0.60	9	0.60	16	0.61	23	0.62	30	0.74	37	0.76
3	0.60	10	0.63	17	0.61	24	0.73	31	0.75	38	0.75
4	0.63	11	0.60	18	0.61	25	0.75	32	0.75	39	0.75
5	0.61	12	0.64	19	0.61	26	0.62	33	0.75	40	0.77
6	0.60	13	0.60	20	0.90	27	0.60	34	0.76	41	0.74
7	0.60	14	0.62	21	0.89	28	0.75	35	0.77	42	0.76

For more information contact:

Larry Hall at 479.936.2709 | Justin Combs at 479.718.2227

